



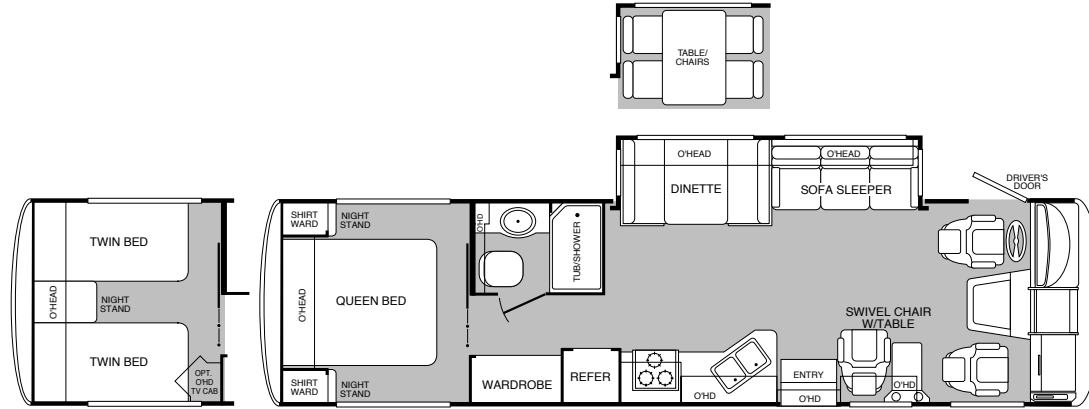
Southwind[®]

FLEETWOOD[®] RV

Live the life of refined luxury, any way the wind blows.

For spur-of-the-moment weekend trips, in-depth exploring, or extended treks to the lake or ski resort, Southwind offers you everything you could ask for in a contemporary home-on-the-go. Abundant floor plans, name-brand appliances, and generous storage capacity both in and out, define Southwind's perfect blend of striking style and user-friendly appeal. Just step up to the 35" wide driver's door that adds an additional entry to Southwind and makes getting out to fill up for gas easy and convenient. Or spend a moment treading on Southwind's luxurious DuPont[®] nylon carpet with Teflon Advanced Carpet Protector or sleek and durable plank wood flooring. You'll start to feel the magic of Southwind's upscale features and appeal instantly. Everything in the new Southwind was designed precisely for the discriminating motor coach traveler with a keen eye for practicality, in an environment that doesn't minimize the importance of luxury and sophistication. So for long-lasting value, style, and open-road elegance, Southwind has got you going in the right direction, whichever way the winds may blow.

2000 Southwind Floor Plans



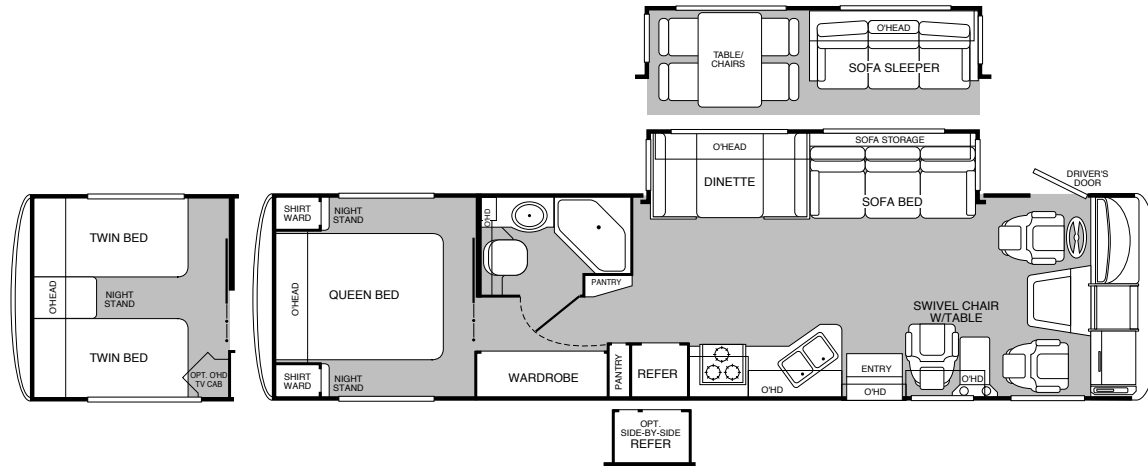
MODEL 32V

- Driver's Side Door
- Living Room Slide-Out
- Fully Enclosed Bathroom
- Swivel Chair with Table
- Dinette or Optional Table with Chairs
- Optional Twin Beds
- Large Tub/Shower



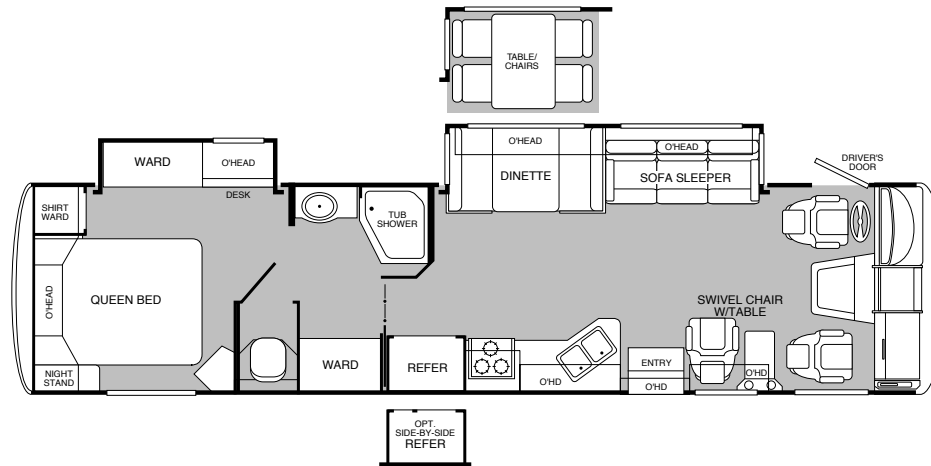
MODEL 34N

- Driver's Side Door
- Living Room Slide-Out
- Dinette or Optional Table with Chairs
- Swivel Chair with Table
- Optional Bedroom Slide-Out with Vanity/Computer Desk
- Optional Dometic® Side-by-Side Refrigerator



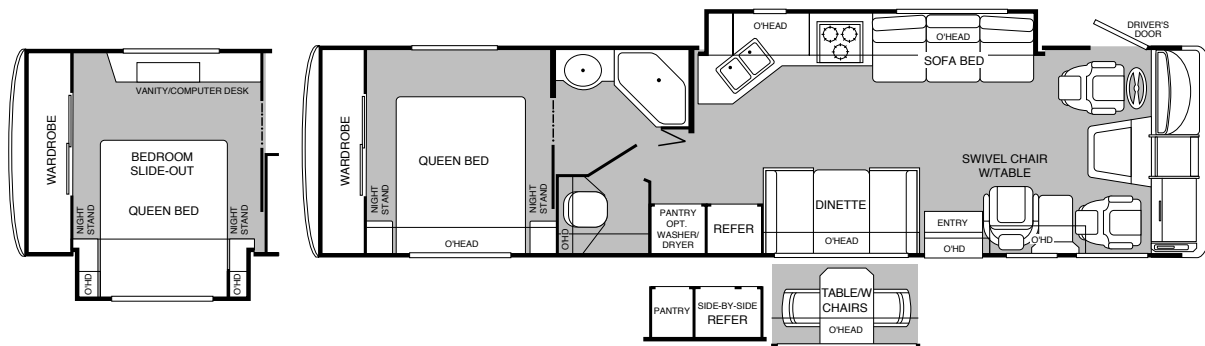
MODEL 35S

- Driver's Side Door
- Living Room Slide-Out
- Dinette or Optional Table with Chairs
- Swivel Chair with Table
- Dual Pantries
- Optional Dometic® Side-by-Side Refrigerator
- Optional Twin Beds



MODEL 36T

- Driver's Side Door
- Living Room Slide-Out
- Wardrobe Slide-Out with Desk
- Dinette or Optional Table with Chairs
- Optional Dometic® Side-by-Side Refrigerator
- Swivel Chair with Table
- Private Toilet



MODEL 36Z

- Driver's Side Door
- Galley/Living Room Slide-Out
- Dinette or Optional Table with Chairs
- Optional Bedroom Slide-Out with Vanity/Computer Desk
- Optional Washer/Dryer
- Optional Dometic® Side-by-Side Refrigerator
- Swivel Chair with Table
- Private Toilet

2000 Southwind Standard Features

EXTERIOR AUTOMOTIVE

Large, Curved Aerodynamic Windshield
Undercoating
Stainless-Steel Wheel Simulators
Mud Flaps
Underhood Utility Light
Steel Surface on Bulkhead
Trailer Hitch with 4-Point Electrical Hook-Up
Halogen Headlights
Fog Lights
Rear Vision Camera
Single Motor Windshield Wipers with Wet Arm

INTERIOR AUTOMOTIVE

Intermittent Wiper Control
Double Swivel Sun Visors with Map Pockets
Driver/Passenger Side Window Shade
Engine Cover Convenience Tray
Driver's Door with Manual Crank Window Lift
Cruise Control
Low Profile Engine Cover
Radio with Cassette AM/FM/MX—Electronic Tuning
Tilt Steering Wheel
Tilt-up Instrument Panel
Soft Surface Automotive Dash
Computer Workstation in Dash
Auxiliary Start Circuit
Battery Disconnect System
Auto A/C Heater Combo
Radio Switch—Main/Auxiliary
Driver/Passenger Captain's Chairs
with Reclining Back/Slide Controls

PLATFORM CONSTRUCTION

Basement Floor Configuration
Heated Water & Holding Tank Compartments
Polyethylene Luggage Compartment Boxes
Paco Beams
Steel Outriggers
Box Vibration Isolators

INTERIOR LIGHTING

Wardrobe Lighting
Fluorescent Ceiling with Dual Bulb
Decor Lighting
Incandescent Lighting
Wall Sconces
Make-Up Lights in Bath

INTERIOR

3 Interior Decors
Woven Jacquard Feature Fabrics
Skylight In Tub/Shower
Brentwood Cherry Wood Grain
Wall-to-Wall Nylon Carpet with Carpet Pad
Vinyl Floor Covering—Galley & Bath
Wood Drawers
Roller Guide Drawer Slides with Transit Ship Locks
Radius Corner Cabinetry
Brushed Chrome Finish Cabinet Hardware
Driver/Passenger & Lounge Reclining Bucket Seats
3-Point Front Seat Belts
Vinyl Pull Shade—Entry
Bedspread with Decor Pillows
Deluxe Pillow-Top Innerspring Mattress
Alder Stained Cherry Cabinet Doors & Drawers
Corian® Galley Countertops
Headboard
Beveled Mirrors
Slide-Out Dinette Bins with Latches
Cedar Lining in Wardrobe
Window Coverings—Day/Night Shades
Alder Stained Cherry Bath Door Trims
Alder Stained Cherry Wood Trim Table Tops
Trash Basket in Galley
Molded Tub/Shower ABS with One-Piece Enclosure
Chrome Bath Accessories
Residential Seat Styling
Entry Rail (Oak & Chrome)
Alder Stained Cherry Raised Panel Overhead Cabinet Doors
Alder Stained Cherry Flat Panel Base Cabinet Doors
Adjustable Cabinet Shelves (Selected Cabinets)
Sink Cutting Board
Solid Divider Doors
Large, Double Stainless-Steel Sink

EXTERIOR STORAGE

Insulated Luggage Doors
Single Paddle/Metal Latches
Continuous One-Piece Bulb Seal
Hidden, Stainless-Steel Latch Rods
Gas Lift Strut Supports—Two Struts per Door
Lighted Compartments
Steel Seal Frames
Pass-Through Storage

EXTERIOR

Fiberglass Front/Rear Cap
One-Piece, Swing-Down Engine Access Door
Fiberglass Front Quarter Panels
Fiberglass Rear Wheel Well Trim
Aerodynamic Styling
Entry Door with Deadbolt Latch
Slider Windows Throughout
Aluminum Front Grille
Utility Compartment with Exterior Shower
4-Point Manual Hydraulic Leveler
Roof Ladder
Exterior Assist Handle
Heated Remote Rear View Mirror
Park Cable Receptacle
Awning Rail/Drip Molding (Both Sides)
Power Entry Step
Porch Light
3 Colorway Graphics to Match Decor
Lower Body Accent Paint

ELECTRICAL

Patio Receptacle
120V/12V AC/DC Converter Central Electrical Panel
120V/12V Wire Raceway
3-Way Water Pump Switch
5.5kW Generator
30-amp Service
Wall Switches
ECC Climate Control
Dual 6V/Deep-Cycle 218-amp House Batteries
TV/VCR Ready

APPLIANCES

20" Panasonic® TV In Front Overhead
Smoke Detector
LP Detector
CO Detector
6-Gallon, Quick-Recovery Water Heater with D.S.I.
22" 3-Burner, High-Output Cook Top with Oven
Light/Power Range Hood & Monitor Panel
Folding Range Cover—Flush Mount Solid Surface Top
Dual Roof High Efficiency A/C with Solar Panel
Water Heater Bypass
Porcelain Toilet with Water Saver
Toilet Tank "Sani-flush" System
8-cu.ft. Dometic® Double Door Refrigerator
Single-Lever Galley Faucet
Water Filter with Faucet
Demand Water Pump with Filter
Power Bath Vent
TV Antenna
Fantastic® Power Roof Vent
Fire Extinguisher
Telephone Jack
Rear Speakers In Bedroom

BODY STRUCTURE

Vacubond Upper/Lower Floor
Vacubond Walls w/Smooth, High Gloss
Exterior Fiberglass
Aluminum Wall/Ceiling Framing
Interlocking Aluminum Extrusions
Radiused Roof with Ducted A/C
Rubber Roof
Power Platform

New Southwind Features For 2000

Our engineering may set us apart from the rest. But the things you'll notice most, when you and your family take a trip, are the top-of-the-line features. This year we have, once again, added to an already large list of features with the following:

- Toilet Tank "Sani-flush" System
- Video Storage in Overhead
- New Premium Vinyl Floor in Galley
- Upgraded Shower Glass Door Latches
- Illuminated Porch Light Switch
- CB Radio Ready Option
- Water Spouts at End of Drip Rail

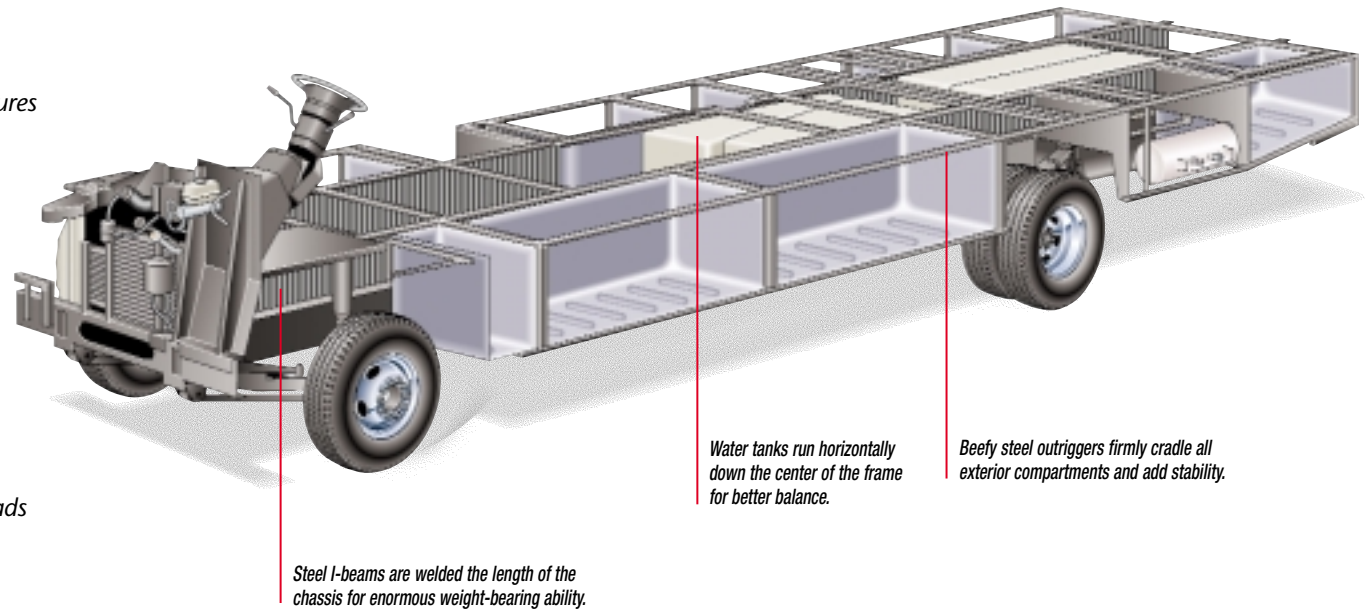
Product information and photography included in this brochure were as accurate as possible at the time of publication. For the most current product information and changes, please visit our Website at www.fleetwood.com or contact your local Fleetwood dealer. Subsequent refinements may be evident in the actual product. Prices and specifications are subject to change without notice. All fuel and liquid capacities are approximate and dimensions are nominal. Fleetwood has designed its motor home brands to provide a variety of potential uses for its customers. Each unit features the optimum storage, fluid, seating and sleeping capabilities. Though the customer enjoys this potential, he/she also has the responsibility to select the proper combinations of loads without exceeding the chassis weight capacities.

2000 Southwind Options

EXTERIOR AUTOMOTIVE	32V	34N	35S	36T	36Z
Ford Chassis 6.8L Engine	Opt	Opt	Opt	Opt	Opt
Workhorse Chassis 7.4L Vortec Engine	Opt	N/A	N/A	N/A	N/A
EXTERIOR	32V	34N	35S	36T	36Z
Awning—USA	Opt	Opt	Opt	Opt	Opt
INTERIOR AUTOMOTIVE	32V	34N	35S	36T	36Z
CB Radio Ready	Opt	Opt	Opt	Opt	Opt
Stereo AM/FM with CD player	Opt	Opt	Opt	Opt	Opt
Driver/Passenger Leather Seats with Power Driver	Opt	Opt	Opt	Opt	Opt
APPLIANCES	32V	34N	35S	36T	36Z
Multiple CD Changer	Opt	Opt	Opt	Opt	Opt
Rear Panasonic® Television with Remote	Opt	Opt	Opt	Opt	Opt
VCR/VHS	Opt	Opt	Opt	Opt	Opt
Dometic® Side-by-Side Refrigerator with Ice Maker	N/A	Opt	Opt	Opt	Opt
Dometic® Double Door Refrigerator with Ice Maker	Opt	Opt	Opt	Opt	Opt
1-cu.ft. Microwave	Std	Std	Std	Std	N/A
Convection Microwave	Opt	Opt	Opt	Opt	Opt
CSA Convection Microwave	Opt	Opt	Opt	Opt	Opt
Washer/Dryer	N/A	N/A	N/A	Opt	Opt
Furnace 20M BTU/34M BTU (Dual)	N/A	N/A	Std	N/A	Std
Furnace 20M BTU/20M BTU (Dual)	N/A	Std	N/A	Std	N/A
Furnace 34M BTU	Std	N/A	N/A	N/A	N/A
DSS Manual Lift/Satellite Dish	Opt	Opt	Opt	Opt	Opt
ELECTRICAL	32V	34N	35S	36T	36Z
7.0kW Generator	Opt	Opt	Opt	Opt	Opt
CSA Package	Opt	Opt	Opt	Opt	Opt
SLEEPING ACCOMMODATIONS (STANDARD)	32V	34N	35S	36T	36Z
Sofa Bed	N/A	N/A	46" x 76"	N/A	46" x 76"
Sofa Sleeper	51 1/2" x 71 1/2"	51 1/2" x 71 1/2"	N/A	51 1/2" x 71 1/2"	N/A
Dinette	41" x 70"	41" x 74"	41" x 74"	41" x 74"	37" x 74"
Queen Bed	60" x 75"	60" x 80"	60" x 80"	60" x 80"	60" x 80"
SLEEPING ACCOMMODATIONS (OPTIONAL)	32V	34N	35S	36T	36Z
Twin Beds with Nightstand	39" x 80"	N/A	39" x 80"	N/A	N/A
Sofa Sleeper (Slide-Out)	N/A	N/A	51 1/2" x 71 1/2"	N/A	N/A
Bedroom (Slide-Out)	N/A	60" x 80"	N/A	N/A	60" x 80"
SLIDE-OUT	32V	34N	35S	36T	36Z
Galley—Galley/Sofa	N/A	N/A	N/A	N/A	Std
Living Room—Dinette/Sofa	Std	Std	Std	Std	N/A
Bedroom Wardrobe—Closet/Organizer	N/A	N/A	N/A	Std	N/A
Free Standing Dinette & Chairs	Opt	Opt	Opt	Opt	N/A
INTERIOR	32V	34N	35S	36T	36Z
Folding Shower Door	Std	N/A	N/A	N/A	N/A
Glass Shower Door with Chrome Frame	N/A	Std	Std	Std	Std
Slide-Out Pantries with Translit Locks	Std	Std	Std	Std	N/A
Lounge Recliner	Opt	Opt	Opt	Opt	Opt
TV Cabinet—Rear Bed	Opt	N/A	Opt	Opt	N/A
Oak Plank Wood Flooring at Galley	Opt	Opt	Opt	Opt	Opt
Dinette Table w/Free Standing Chairs	Opt	Opt	Opt	Opt	Opt

The Power Platform Makes The Difference

Southwind's quality begins long before the features come on board. We begin by building on our exclusive Power Platform, with Paco Beam, a unique truss design welded together using tubular steel that's durable, strong, and dependable. The result is a quiet and nearly flawless ride, increased floor strength, and substantially more storage space below. An all-steel foundation further reduces stress loads on the sidewalls and minimizes chassis flex on uneven roads.



Drawing is for illustrative purpose only to highlight aspects of motor home construction. Actual motor home design depends on model and is subject to change.

2000 Southwind Specifications

FORD CHASSIS	32V	34N	35S	36T	36Z
Engine CID	415	415	415	415	415
Wheel Base	208"	208"	228"	228"	228"
GVWR lbs/kgs (1)	20,500/9,299	20,500/9,299	20,500/9,299	20,500/9,299	20,500/9,299
Front GAWR lbs/kgs (2)	7,000/3,175	7,000/3,175	7,000/3,175	7,000/3,175	7,000/3,175
Rear GAWR lbs/kgs (2)	13,500/6,124	13,500/6,124	13,500/6,124	13,500/6,124	13,500/6,124
Base Weight lbs/kgs (3)	15,700/7,122	15,900/7,212	16,000/7,258	16,650/7,552	16,000/7,257
GCWR lbs/kgs (4)	25,500/11,567	25,500/11,567	25,500/11,567	25,500/11,567	25,500/11,567
Hitch Rating/Tongue Weight lbs	5,000/500	5,000/500	5,000/500	5,000/500	5,000/500
Hitch Rating/Tongue Weight kgs	2,268/227	2,268/227	2,268/227	2,268/227	2,268/227
Fuel Capacity gal/lbs	75/450	75/450	75/450	75/450	75/450
Fuel Capacity gal/kgs	75/204	75/204	75/204	75/204	75/204

WORKHORSE CHASSIS	32V	34N	35S	36T	36Z
Engine CID	454	N/A	N/A	N/A	N/A
Wheel Base	208"	N/A	N/A	N/A	N/A
GVWR lbs/kgs (1)	18,000/8,165	N/A	N/A	N/A	N/A
Front GAWR lbs/kgs (2)	6,000/2,722	N/A	N/A	N/A	N/A
Rear GAWR lbs/kgs (2)	12,000/5,443	N/A	N/A	N/A	N/A
Base Weight lbs/kgs (3)	14,790/6,709 (EST.)	N/A	N/A	N/A	N/A
GCWR lbs/kgs (4)	21,000/9,525	N/A	N/A	N/A	N/A
Hitch Rating/Tongue Weight lbs	3,500/250	N/A	N/A	N/A	N/A
Hitch Rating/Tongue Weight kgs	1,588/113	N/A	N/A	N/A	N/A
Fuel Capacity gal/lbs	75/450	N/A	N/A	N/A	N/A
Fuel Capacity gal/kgs	75/204	N/A	N/A	N/A	N/A

DIMENSIONS	32V	34N	35S	36T	36Z
Overall Length	32' 10"	34' 9"	35' 7"	36' 7"	36' 7"
Overall Height with A/C	11' 11"	11' 11"	11' 11"	11' 11"	11' 11"
Overall Width (maximum)	102"	102"	102"	102"	102"
Interior Height (maximum)	79"	79"	79"	79"	79"
Interior Width (maximum)	96"	96"	96"	96"	96"

STORAGE CAPACITY (CU.FT.)	32V	34N	35S	36T	36Z
Exterior	114	114	116	121	120

LIQUID CAPACITIES (GALLONS/LITERS)	32V	34N	35S	36T	36Z
Fresh Water	60/227	80/303	80/303	70/265	70/265
Water Heater	6/23	6/23	6/23	6/23	6/23
Body-Waste Holding	42/159	44/167	42/159	47/178	47/178
Grey-Water Holding	58/220	58/220	58/220	58/220	58/220
Appliance LPG Tank (wc/see note)	25/95	25/95	25/95	25/95	25/95

Note: Tank manufacturer's listed water capacity (wc). Actual filled LP capacity is 80% of listing due to safety shutoff required on tank.

1. GVWR (Gross Vehicle Weight Rating): Means the maximum permissible weight of this motor home. The GVWR is equal to or greater than the sum of the unloaded vehicle weight plus the net carrying capacity.
2. GAWR (Gross Axle Weight Rating): Means the maximum permissible loaded weight a specific axle is designed to carry.
3. Base Weight: Means the weight of the motor home without fuel, options, water, cargo, or passengers.
4. GCWR (Gross Combination Weight Rating): Means the value specified by the motor home manufacturer as the maximum allowable loaded weight of this motor home with its towed trailer or towed vehicle. Towing and braking capacities may differ. Refer to Fleetwood and chassis manufacturer manuals for complete information.

FLEETWOOD RV

Fleetwood Enterprises, Inc.
RV Marketing
P.O. Box 7638
Riverside, CA 92513-7638



Southwind[®]
FLEETWOOD RV

Your local Fleetwood RV dealer is:

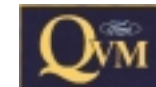
TO FIND A FLEETWOOD DEALER near you, call 24 hours a day at 1-800-444-4905 or visit our Website at www.fleetwood.com

FOR CUSTOMER ASSISTANCE, call toll free 24 hours a day at 1-800-322-8216, visit our Website, or you may write to Fleetwood Enterprises, Inc., P.O. Box 7638, Riverside, CA 92513-7638.

Product information and photography included in this brochure were as accurate as possible at the time of publication. For the most current product information and changes, please visit our Website at www.fleetwood.com or contact your local Fleetwood dealer. Subsequent refinements may be evident in the actual product. Prices and specifications are subject to change without notice. All fuel and liquid capacities are approximate and dimensions are nominal. Fleetwood has designed its motor home brands to provide a variety of potential uses for its customers. Each unit features the optimum storage, fluid, seating and sleeping capabilities. Though the customer enjoys this potential, he/she also has the responsibility to select the proper combinations of loads without exceeding the chassis weight capacities.

© 1999 Fleetwood Enterprises, Inc.

Inventory Control Number 380002/2nd Edition 12/99



This award certifies that Fleetwood has met Ford's rigid quality standards for modifying a Ford chassis.